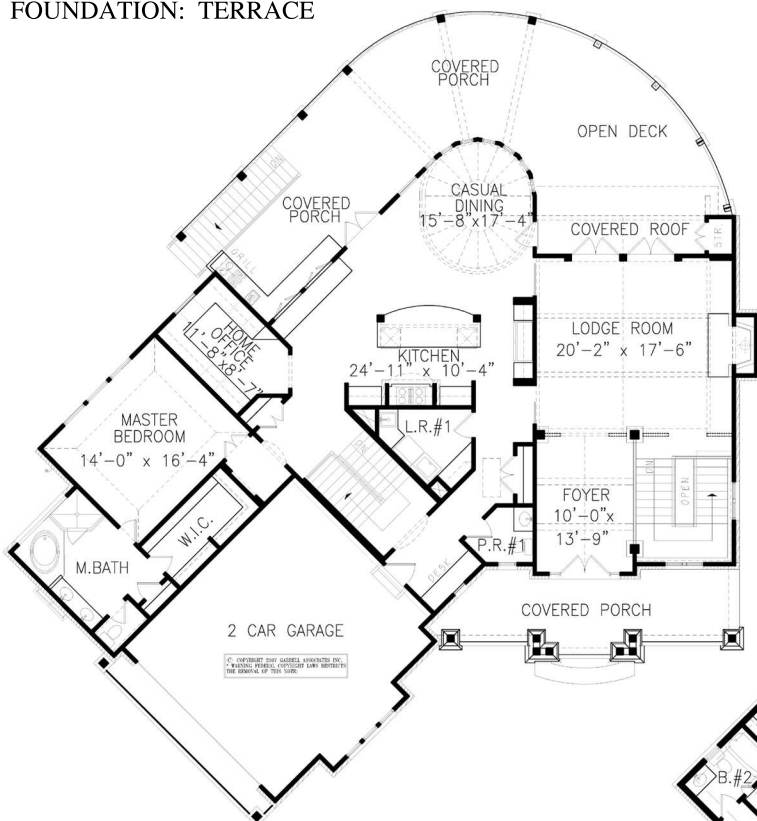




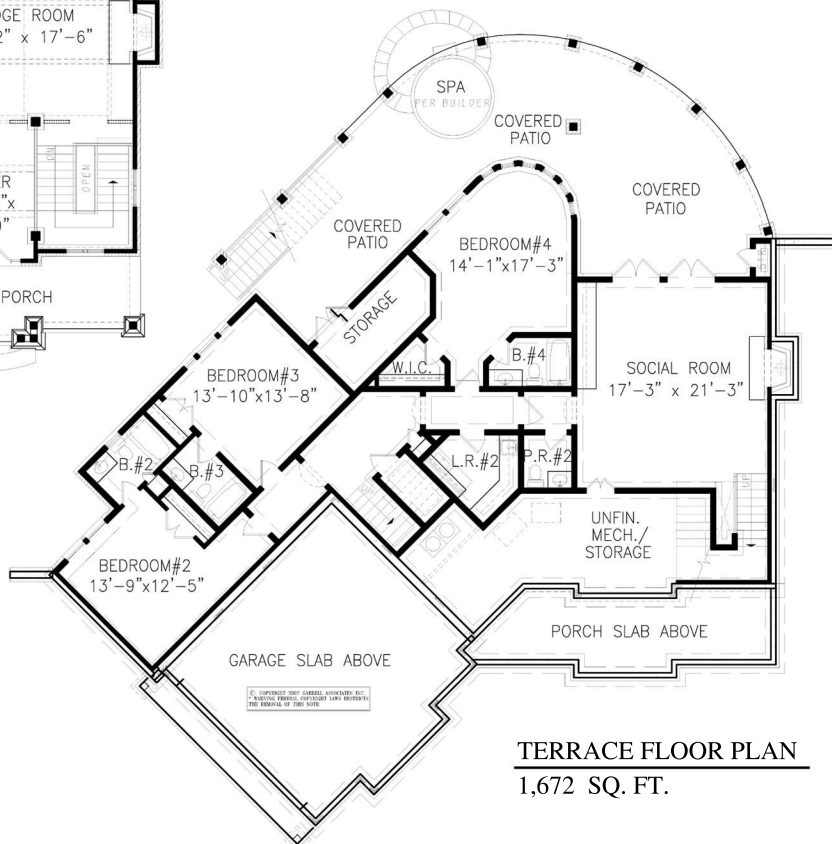
THE LAKE TIMBER LODGE

PLAN #07094 3,921 SQ. FT.
 WIDTH 78'-1"
 DEPTH 84'-4"
 FOUNDATION: TERRACE



FIRST FLOOR PLAN

2,249 SQ. FT.
 GARAGE 580 SQ. FT.



TERRACE FLOOR PLAN

1,672 SQ. FT.



ASSOCIATES, INC.
 790 PEACHTREE INDUSTRIAL BLVD., SUITE 200
 SUWANEE, GA 30024
 PH. (770) 614-3239 FAX (770) 614-5948
 www.garrellassociates.com

ARTIST'S CONCEPTION MAY VARY FROM ACTUAL PLAN

© Copyright 2007-2009, Garrell Associates, Inc.